

SONY®

Color Video Monitors

PVM-20L1*

PVM-14L1*

PVM-9L1*



*19-inch, 13-inch, 8-inch viewable area, measured diagonally

PVM-L1 Series

Sony is well known in the broadcast and production industry for providing high-precision video monitors that support the most demanding applications. Over the years, Sony expanded the line-up to address the wider needs of the industry by providing the most extensive range of professional monitors in the marketplace today.

Sony's latest introduction, the cost-effective PVM-L1 Series monitors, offers an excellent entry level monitor for a variety of applications. The series features resolutions of up to 600 TV lines*, and all the practical functions you'd expect from Sony Trinitron® professional displays.

Enhanced by high-resolution image quality, accurate color reproduction, and essential viewing functions, the PVM-L1 series monitors are ideal for business and institutional solutions — in the corporate production facility, in the classroom, or in an NLE suite.

*Featured on the PVM-20L1 and PVM-14L1 models.



PVM-14L1**



PVM-20L1**



PVM-9L1**

**19-inch, 13-inch, 8-inch viewable area, measured diagonally.

Features

Superb Picture Performance

High Picture Quality

All Sony PVM-L1 monitors use Trinitron CRT technology to provide clear and precise images. The PVM-20L1 and PVM-14L1 models generate a striking image resolution of 600 TV lines, while the PVM-9L1 model supports a resolution of 250 TV lines.

Beam-Current Feedback Circuit

When monitors are in continuous operation over long periods of time, their white balance is often prone to drift. To combat this, PVM-L1 Series monitors are equipped with a beam-current feedback circuit, which corrects white-balance drift for the long-term stability of on-screen color reproduction.

Digital Comb Filter

The PVM-20L1 and PVM-14L1 models are equipped with a digital comb filter that enhances the luminance/chrominance separation used to reduce cross-color interference and color noise. This provides clear and highly detailed picture reproduction.

NTSC/PAL Operation

PVM-L1 Series monitors can automatically detect whether the composite signal input is NTSC or PAL. Therefore, users are not required to manually select the appropriate color system.

Effective Operational Functions

4:3/16:9 Capability

The aspect ratio can be easily switched between 4:3 and 16:9 via the on-screen menu facility.

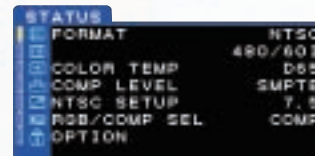
Switchable Color Temperature

The color temperature can be selected from a choice of D65, D93 or a user-defined preset (from 5000K to 10000K).

Six-Language On-Screen Display

Sony PVM-L1 Series monitors provide a variety of on-screen window-like menus for easy monitor adjustment and operation.

The On-Screen Display is available in English, French, Spanish, German, Italian and Japanese.



Other Features

19-inch EIA-Standard Rack Compatibility

PVM-9L1 monitors can be mounted side by side in a 19-inch EIA-standard rack using the optional MB-520 rack-mounting bracket. Empty spaces in the rack system can be covered with the optional MB-509 mounting panel. PVM-14L1 monitors can be mounted using the optional MB-502B* mounting bracket while the PVM-20L1 monitors can be mounted using the optional SLR-103A slide-rail kit.

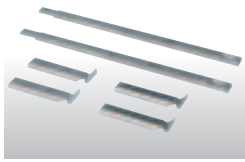
Audio-Monitoring Facility

All PVM-L1 monitors have an integrated speaker (0.8 W, monaural) that enables users to monitor sound.

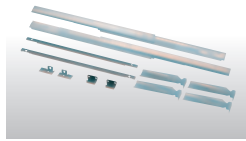
Worldwide Power Supply

Compatible with AC 100 to 240 V (50/60 Hz) power supply.

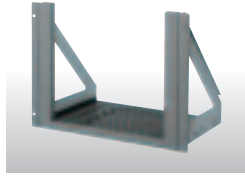
Optional Accessories



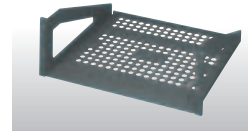
SLR-102
Slide Rail Kit
for the PVM-14L1.



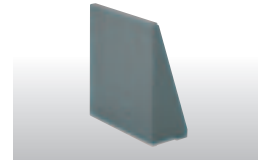
SLR-103A
Slide Rail Kit
for the PVM-20L1.



MB-502B
Rack Mount Bracket
for the PVM-14L1.



MB-520
Rack Mount Bracket
for the PVM-9L1.



MB-509
Blank Panel
for the PVM-9L1.

Supplied Accessories

- AC cord (1)
- Operating Instructions (1)

Rear Panel



PVM-14L1
PVM-20L1



PVM-9L1



Front Panel



PVM-14L1
PVM-20L1



PVM-9L1

Specifications

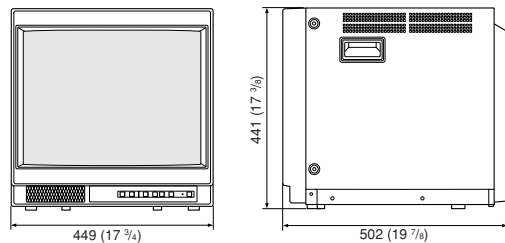
		PVM-20L1	PVM-14L1	PVM-9L1
General				
CRT	CRT type *	20-inch Trinitron	14-inch Trinitron	9-inch Trinitron
	AG pitch	0.4 mm	0.25 mm	0.5 mm
	Phosphor	P-22		
	Effective picture size (4:3)	385.8 (W) x 290.6 (H) mm, 481.3 (Diagonal) mm	267.5 (W) x 200.6 (H) mm, 340.0 (Diagonal) mm	159.5 (W) x 117.0 (H) mm 194.5 (Diagonal) mm
Center Resolution (Y/C input 4:3)		600 TV lines		250 TV lines
Color system		PAL, NTSC		
Scanning frequency		1 5.734 kHz (NTSC), 15.625 kHz (PAL)		
Normal scan		7% overscan		6% overscan
Linearity	Horizontal	Less than 8% (typical)		
	Vertical	Less than 7% (typical)		
Convergence	Center	0.5 mm (Typical)	0.4 mm (Typical)	
	Peripheral	0.7 mm (Typical)	0.5 mm (Typical)	
Raster size stability	Horizontal	1.0% (typical)		
	Vertical	1.5% (typical)		
HV regulation		4.0% (typical)	3.5% (typical)	3.0% (typical)
Color temperature		D65/D93/User adjustable		
Power requirements		AC 100 to 240 V, 50/60 Hz		
Power consumption (Typical)		75 W	68 W	40 W
Dimensions (W x H x D)		17 3/4 x 17 3/8 x 19 7/8 inches (Approx. 449 x 441 x 502 mm)	13 5/8 x 13 1/2 x 16 3/8 inches (Approx. 346 x 340 x 414 mm)	8 5/8 x 8 5/8 x 13 7/8 inches (Approx. 217 x 218 x 350 mm)
Weight		61 lb 12 oz (Approx. 28.0 kg)	33 lb 1 oz (Approx. 15.0 kg)	13 lb 14 oz (Approx. 6.3 kg)
Input/Output				
Line A Input/Output	Composite	BNC, Loop-through, automatic 75 Ω termination 1.0 Vp-p +3 dB/-6 dB, sync negative		
	Y/C**	Mini Din 4-pin, Loop-through, automatic 75 Ω termination Y: 1.0 Vp-p, sync negative C: 0.286 Vp-p (NTSC) / 0.3 Vp-p (PAL)		
	Audio	Phono jack, Loop-through -5 dBu 47 kΩ or higher		
Line B Input	Composite	BNC 1.0 Vp-p +3dB/-06 dB, sync negative		-
	Y/C**	Mini Din 4-pin Y: 1.0 Vp-p, sync negative C: 0.286 Vp-p (NTSC) / 0.3 Vp-p (PAL)		-
	Audio	Phono jack -5 dBu 47 kΩ or higher		-
Remote	Parallel remote	Modular 8-pin (Fixed)		
Built-in Speaker Output		0.8 W (Distortion: Less than 5%)		
Regulation Compliance		UL-1950, CSA-950, EN 60950, VCCI class A, FCC class A, IC class A, C-Tick, CE (LVD), CE (EMC), JEITA, DHHS, DNHW, CCC, KTL, BSMI		
Operating conditions	Operating temperature	0 to +35° C (+32 to +95° F)		
	Storage temperature	-10 to +40° C (+14 to +104° F)		
	Operating humidity	30 to 85% (No condensation)		
	Storage humidity	0 to 90%		

*Viewable area, measured diagonally.

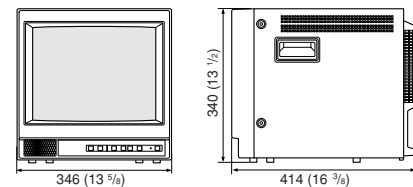
** The Y/C input has priority over the composite input.

Dimensions

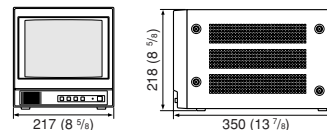
■ PVM-20L1



■ PVM-14L1



■ PVM-9L1



Unit: mm (inches)

SONY®

Sony Electronics Inc.
1 Sony Drive
Park Ridge, NJ 07656
www.sony.com/displaysystems

©2003 Sony Electronics Inc. All rights reserved.
Reproduction in whole or in part without written permission is prohibited.
All non-metric weights and measures are approximate.
Features and specifications are subject to change without notice.
Sony and Trinitron are trademarks of Sony.