

SONY[®]

Color Video Monitor

PVM-20L2

PVM-14L2

PVM-9L2



PVM-L2 Series

Introducing Sony's new cost-effective PVM-L2 Series – everything you'd expect in Sony Trinitron® professional monitors, and much more. Enhanced by stunning high-resolution image quality and new input flexibility, these monitors provide a wide range of options for broadcast, studio, and field production needs.

With your choice of 20"¹, 14"² or 9"³ CRT's, option slots to provide SD-SDI and SDTI-CP, DV and additional analog component input capability, the PVM-L2 Series gives you unprecedented flexibility. In addition to this flexibility, the PVM-L2 Series monitors have a quick response time, which is inherent in CRT monitors. Never before has Sony packed so much value and performance in a monitor series ideally suited to so many applications, today and tomorrow!



PVM-14L2



PVM-20L2



PVM-9L2

¹ 19-inches viewable area measured diagonally.
² 13 1/2-inches viewable area measured diagonally.
³ 7 3/4-inches viewable area measured diagonally.

Features

Superior Picture Performance

High Picture Quality

The Trinitron CRT incorporated in both the PVM-20L2 and PVM-14L2 provides clear and precise images with a resolution of 600 TV lines*.

* Supported on PVM-20L2 and PVM-14L2 monitors. The PVM-9L2 incorporates a Trinitron CRT that provides images with a resolution of 250 TV lines.

Beam-Current Feedback Circuit

Because monitor white balance is prone to drift during continuous operation over long periods of time, PVM-L2 Series monitors are equipped with a beam-current feedback circuit. This corrects white balance drift, resulting in the long-term stability of color reproduction.

Digital Comb Filter

The NTSC/PAL digital comb filter enhances the luminance/chrominance separation used to reduce cross-color interference and color noise, ensuring clear and highly detailed picture reproduction.

Input Flexibility

Versatile Signal Input

PVM-L2 Series monitors are equipped with input connectors for component (Y/R-Y/B-Y)*, RGB*, Y/C and composite signals to provide system flexibility. For accurate reproduction, the component level can be adjusted according to the input system.

* The PVM-9L2 monitor requires the optional BKM-129X Analog Component Input Adaptor.

NTSC/PAL Operation

PVM-L2 Series monitors can automatically detect whether the composite signal input is NTSC or PAL. Users are not required to manually select the appropriate color system.

Signal Interface Options

With an optional adaptor inserted into the option slot on the rear panel, PVM-L2 Series monitors can accept direct input from a wide variety of signal formats.



SDI 4:2:2 Input Adaptor

BKM-120D

- SD-SDI* signal input (x2)/SD-SDI* signal output with active loop-through (x2)
- Power consumption: 4 W
- Dimensions (W x H x D): 25 x 162 x 122 mm (1 x 6 1/2 x 4 7/8 inches)
- Mass: Approx. 310 g (11 oz)

* Embedded audio is not supported

Analog Component Input Adaptor

BKM-129X

- Analog component (Y/R-Y/B-Y, RGB) with loop-through (x 1, automatic 75 Ω termination)/EXT SYNC with loop-through BNC (x 1, automatic 75 Ω termination)
- Power consumption: 0.5 W
- Dimensions (W x H x D): 25 x 162 x 122 mm (1 x 6 1/2 x 4 7/8 inches)
- Mass: Approx. 270 g (10 oz)

SDTI-CP/SDI Input Adaptor

BKM-150CP

- SDTI-CP/SD-SDI signal input (x2)/SDTI-CP/SD-SDI signal output with active loop-through (x2)
- Decoded analog audio output (x2)
- Power consumption: Max. 15W
- Dimensions (W x H x D): 50 x 162 x 122 mm (2 x 6 1/2 x 4 7/8 inches)
- Mass: Approx. 580 g (1 lb 4 oz)

DV Input Adaptor

BKM-155DV

- DV input/output (x2) (6-pin)
- Analog audio output (x2)
- Power consumption: 10 W
- Dimensions: 50 (W) x 162 (H) x 122 (D) mm (2 x 6 1/2 x 4 7/8 inches)
- Mass: Approx. 460 g (1 lb)

PAL-M Input Adaptor

BKM-126M*

- Analog composite PAL-M with loop-through (input x 2, output x 2)
- Power consumption: 3 W
- Dimensions (W x H x D): 25 x 162 x 122 mm (1 x 6 1/2 x 4 7/8 inches)
- Mass: Approx. 270g (10 oz)

* For Brazil market only.

Caption Vision Decoder

A Caption Vision Decoder (closed caption) is also available.

For details, please contact your nearest Sony office.

* For United States market only.

External Sync

PVM-L2 Series monitors accept external sync signals, for easy synchronization with other equipment. The external sync can be set to automatically detect the input type and switch to the appropriate settings.

Effective Operational Functions

4:3/16:9 Capability

Pressing a button on the front panel allows users to switch the aspect ratio between 4:3 and 16:9.

Underscan Switch

In Underscan mode, the picture size is reduced and the entire active picture is displayed on the screen. This function allows users to observe picture edges more clearly.

Switchable Color Temperature

The color temperature can be selected from a choice of D65, D93 or user-preset (5000K to 10000K).

Blue-Only Mode

These monitors enable signal noise to be precisely evaluated, and chroma/phase adjustments to be made easily using Blue-Only mode, which displays images with a bluish hue.

Auto/Manual Degaussing

When the power is turned on, the CRT is automatically degaussed. This degaussing can also be initiated by pressing the Manual Degauss button.

Simple Operation

Auto Chroma/Phase Setup

An Auto Chroma/Phase Setup mode facilitates the complex, delicate procedure of monitor adjustment. Using broadcast-standard color bars as a reference, this function automatically calibrates chroma and phase. This proves very convenient in computer-based editing systems, enabling easy alignment of the color reproduction of video output signals.

On-Screen Menu

Sony PVM-L2 Series monitors provide a variety of window-type on-screen menus for easy monitor adjustment and operation.



Parallel Remote Control/Tally

Parallel Remote Control and Tally can be controlled via a Modular 8-pin connector, and the pin assignments can be set from the On-Screen Menu.

Sub-Control Mode

In this mode, the adjustment range of the contrast, brightness, chroma and phase controls can be shifted. A preferred level can be set for the center-click position of each control, allowing multiple monitors to be set to the same level.

Bias/Gain Control

Bias and Gain controls are provided on the front panel. What's more, it's easy to make fine adjustments to the white balance while still observing the screen using the On-Screen Menu.

AC/DC Operation

As well as operating from an AC power source, the PVM-9L2 can also be powered from a 12 V DC source for use in the field. The monitor can also be operated using an optional Sony BP series batteries.

* The PVM-9L2 is not equipped with a battery charger. To charge batteries, an appropriate battery charger must be used.

Other Features

19-inch EIA-Standard Rack-Mountable

PVM-9L2 monitors can be mounted side by side in a 19-inch EIA-standard rack using the optional MB-520 rack-mounting bracket. Empty spaces can be covered with optional MB-509 Mounting panel. PVM-14L2 monitors can be mounted using the optional MB-502B* and MB-502C** mounting bracket. PVM-20L2 monitors can be mounted using the optional SLR-103A* and SLR-103C** slide-rail kit.

* For the market except Europe. **For Europe market only.

Audio-Monitoring Facility

A speaker (0.8 W, monaural) is built into the monitor for sound monitoring.

Carrying Handle

The PVM-9L2 can be carried to any location using its integrated carrying handle.

Monitor ENG Kit

The optional VF-508 ENG Kit for PVM-9L2 monitors contains a monitor hood and cord reel for operational convenience in the field.

Worldwide power supply

Applies to AC 100 to 240 V (50/60 Hz).

Optional Accessories



BKM-120D
SDI 4:2:2 Input Adaptor



BKM-129X
Analog Component Input Adaptor



BKM-150CP
SDTI-CP/SDI Input Adaptor



BKM-126M
PAL-M Input Adaptor



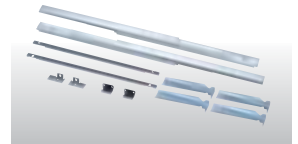
BKM-155DV
DV Input Adaptor



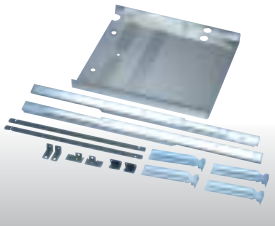
TU-1040E*
TV Tuner
* For PAL area market only.



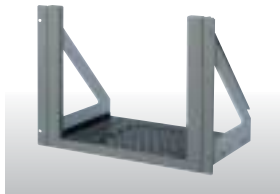
TU-1041U*
TV Tuner
* For NTSC area market only.



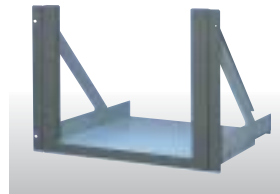
SLR-103A*
Slide Rail Kit for
PVM-20L2
* For the market except Europe.



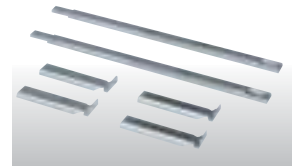
SLR-103C*
Slide Rail Kit (AEP) for
PVM-20L2
* For Europe market only.



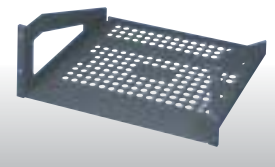
MB-502B*
Rack Mount Bracket for
PVM-14L2
* For the market except Europe.



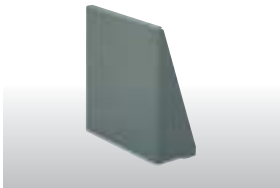
MB-502C*
Rack Mount Bracket (AEP) for
PVM-14L2
* For Europe market only.



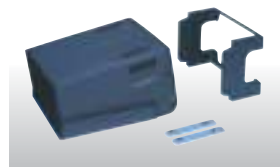
SLR-102
Slide Rail Kit for
PVM-14L2



MB-520
Rack Mount Bracket for
PVM-9L2



MB-509
Blank Panel for
PVM-9L2



VF-508
Monitor ENG Kit
(monitor hood and cord reel)
for PVM-9L2



BP-M50/M100
Rechargeable Nickel Metal
Hydride Battery



BP-IL75
Rechargeable Lithium-ion
Battery Pack



BC-M50
Battery Charger for
BP-M50/M100

Supplied Accessories

- AC Plug Holder for PVM-20L2 , PVM-14L2 and PVM-9L2 Monitors
- AC Cord (1)
- Operation Manual (1)

Rear Panel

PVM-9L2



PVM-14L2/20L2



Front Panel



PVM-14L2/20L2



PVM-9L2

Specifications

| | | PVM-20L2 | PVM-14L2 | PVM-9L2 |
|--|------------------------------|---|---|---|
| General | | | | |
| CRT | CRT type | 20-inch Trinitron | 14-inch Trinitron | 9-inch Trinitron |
| | AG pitch | 0.4 mm | 0.25 mm | 0.5 mm |
| | Phosphor | P-22 | | |
| | Effective picture size (4:3) | 385.8 (W) x 290.6 (H) mm, 481.3 mm (measured diagonally) | 267.5 (W) x 200.6 (H) mm, 340.0 mm (measured diagonally) | 159.5 (W) x 117.0 (H) mm 194.9 mm (measured diagonally) |
| Resolution (4:3/16:9) | | 600 TV lines | | 250 TV lines |
| Color system | | PAL, NTSC | | |
| Aperture correction | | 0 to 6 dB | | |
| Frequency response | | 10.0 MHz, +0 dB/-3 dB | | 6.0 MHz, +0 dB/-3dB |
| Synchronization | | AFC time constant 1.0 ms | | |
| Scanning frequency | | 15.734 kHz (NTSC), 15.625 kHz (PAL) | | |
| Normal scan | | 7% overscan | | |
| Underscan | | 5% underscan | | |
| Linearity | Horizontal | Less than 5% | | Less than 4% |
| | Vertical | Less than 5% | | Less than 4% |
| Convergence | Center | 0.5 mm (typical) | | 0.4 mm (typical) |
| | Peripheral area | 0.7 mm (typical) | | 0.5 mm (typical) |
| Raster size stability | Horizontal | | 1.0% | |
| | Vertical | | 1.5% | |
| HV regulation | | 4.0% | 3.5% | 3.0% |
| Color temperature | | D65/D93/User adjustable | | |
| Power requirements | | AC 100 to 240 V, 50/60 Hz | | |
| Power consumption (Typical/with options) | | 98 W, 108 W (with BKM-150CP) | 75 W, 86 W (with BKM-150CP) | AC:47 W, DC:38 W AC:58 W, DC:48 W (with BKM-150CP) |
| Dimensions (W x H x D) | | Approx. 453 x 463 x 529 mm (17 7/8 x 18 1/4 x 20 7/8 inches) | Approx. 346 x 340 x 430 mm (13 5/8 x 13 1/2 x 17 inches) | Approx. 217 x 218 x 373 mm (8 5/8 x 8 5/8 x 14 3/4 inches) |
| Mass | | Approx. 32.6 kg (72 lb 12 oz) | Approx. 18.0 kg (39 lb 11 oz) | Approx. 8.0 kg (17 lb 10 oz) |
| Input/Output | | | | |
| Line A | Composite | BNC, Loop-through, automatic 75 Ω termination 1.0 Vp-p +3 dB/-6 dB, sync negative | | |
| | Y/C* | Mini Din 4-pin, Loop-through, automatic 75 Ω termination Y: 1.0 Vp-p, sync negative C: 0.286 Vp-p (NTSC) / 0.3 Vp-p (PAL) | | |
| | Audio | Phono jack, -5 dBu 47 kΩ or higher | | |
| Line B | Composite | BNC, Loop-through, automatic 75 Ω termination 1.0 Vp-p +3 dB/-6 dB, sync negative | | |
| | Audio | Phono jack, -5 dBu 47 kΩ or higher | | |
| RGB/Component | | BNC, Loop-through, automatic 75 Ω termination | | |
| | G/Y | 0.7 Vp-p +3 dB/-6 dB | | - |
| | Sync on G | 0.3 Vp-p | | - |
| | B/B-Y | 0.7 Vp-p +3 dB/-6 dB | | - |
| | R/R-Y | 0.7 Vp-p +3 dB/-6 dB | | - |
| | Audio | Phono jack -5 dBu, 47 kΩ or higher | | - |
| Ext. sync Input/Output | | BNC, Loop-through, automatic 75 Ω termination 4.0 Vp-p ± 6 dB, sync negative, usable tri-level sync signal 0.6 Vp-p ± 6 dB | | |
| Option slot | | 1x | | |
| | Audio | Phono jack x 2, -5 dBu 47 kΩ or higher | | |
| Remote | Parallel remote | Modular 8-pin (Assignable) | | |
| Audio output | | 0.8 W (Distortion: Less than 5%) | | |
| Regulation Compliance | | UL1950, CSA No.950, EN60950, EN55103-1, EN55103-2, VCCI, FCC class A, IC class A, C-Tick, CE, JEITA, DHHS, DNHWH, CCC, KTL | | |
| Operating conditions | Operating temperature | 0 to +35° C (+32 to +95° F) | | |
| | Storage temperature | -10 to +40° C (+14 to +104° F) | | |
| | Operating humidity | 30 to 85% (No condensation) | | |
| | Storage humidity | 0 to 90% | | |

* The Y/C input has priority over the Composite input.

Distributed by

©2003 Sony Corporation. All rights reserved.
 Reproduction in whole or in part without written permissions is prohibited.
 All non-metric weights and measures are approximate.
 Features and specifications are subject to change without notice.
 Sony and Trinitron are trademarks of Sony Corporation.